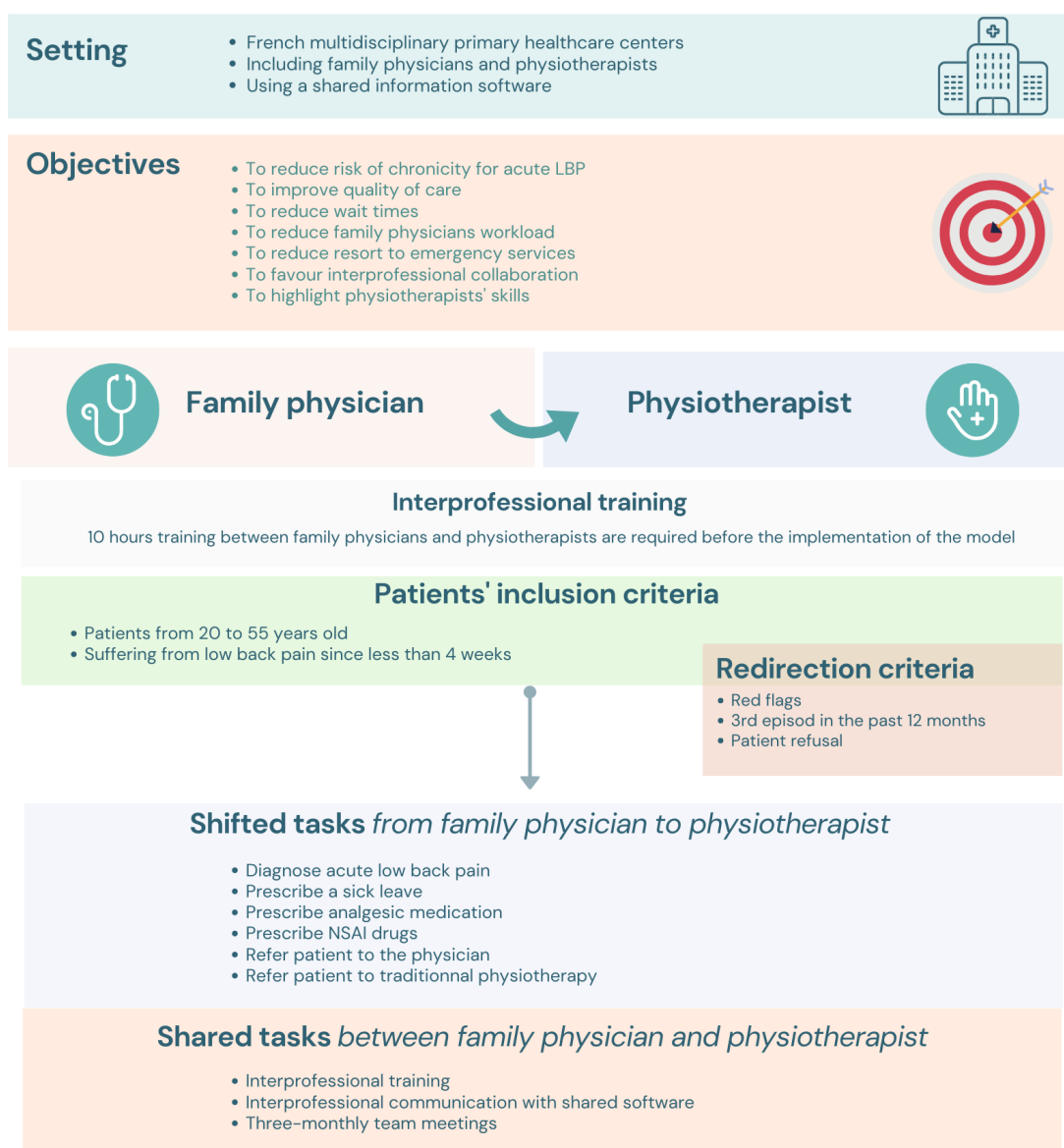


## Supplemental materials

### 1. Task sharing and shifting model for acute low back pain

## French model of task sharing and shifting for acute low back pain

Between family physicians and physiotherapists



Official text available at • <https://www.legifrance.gouv.fr/jorf/id/JORFTEXT000041697989>

Graphic created by AK

## 2. Questionnaire survey

We invite you to participate in a cross-sectional descriptive study by answering the following questionnaire. The aim of the study is to assess the acceptability of a new model of task sharing and task shifting between physiotherapists and family physicians for the management of acute low back pain within multidisciplinary primary healthcare centers of the Auvergne-Rhone-Alps region, and to identify the perceived levers and obstacles to its implementation. Your answers are confidential.

The questionnaire is divided into 8 sections, defined as follows:

- 1- Demographic characteristics of participants,
- 2- Characteristics of the primary healthcare centers,
- 3- Experience of respondents regarding interprofessional collaboration,
- 4- Knowledge about the TS/S models,
- 5- Perception and acceptability of the TS/S model for acute LBP,
- 6- Perception of physiotherapist's skills for the management of acute LBP,
- 7- Perception of the barriers and facilitators to the implementation of the model,
- 8- Ability to set up the model, 9- Perception of the deployment of the model.

The survey takes about 20 minutes to complete.

### Section 1: Demographic characteristics of participants

1. What is your gender?
  - a. Male
  - b. Female
  - c. Other
2. What is your age?
3. What is your profession?
  - a. Family physician
  - b. Physiotherapist
  - c. Other (precise: ....)
4. How long have you been working in a multidisciplinary healthcare center?

### Section 2: Characteristics of the primary healthcare centers

5. In what departement is your primary healthcare center located?
6. What is your practice area ?
  - a. Rural
  - b. Semi-rural
  - c. Urban peripheral
  - d. Urban
  - e. Mountain

### Section 3. Experience of respondents with interprofessional collaboration

7. How often have you collaborated with family physicians / physiotherapists in the 12 past months?
  - a. Frequently
  - b. Occasionally
  - c. Rarely
  - d. Never
  - e. I don't know

8. How often did you carry out these interprofessional activities in the 12 past months?

- Addressing patients to family physician / physiotherapist
  - Discussing about patients under common care
  - Sharing tools and organization with family physician / physiotherapist
  - Participating in regular team meetings to discuss professional practice
  - Harmonizing professional practice
  - Conducting collaborative care for patients
  - Sharing research projects
- a. Frequently  
b. Occasionally  
c. Rarely  
d. Never  
e. I don't know

#### **Section 4 : General knowledge about models of task-sharing and shifting**

9. Did you know that models of task-sharing and shifting can legally be implemented between family physicians and other primary care practitioners in French multidisciplinary primary healthcare centers?

- a. Yes  
b. No

10. Have you already set up a model of task-sharing and shifting in your primary healthcare center ?

- a. Yes  
b. No

11. If yes, which professionals were involved in the model?

12. Did you know that models of task-sharing and shifting can be implemented between family physicians and physiotherapists for the management of patients with acute low back pain?

#### **Section 5. Perception and acceptability of the TS/S model for acute LBP**

13. What is your perception about the 10 hours training required before the implementation of the TS/S model :

- a. Totally sufficient  
b. Mostly sufficient  
c. Mostly insufficient  
d. Totally insufficient  
e. I don't know

14. What is your perception regarding the inclusion criteria of the TS/S model :

- Patients from 20 to 55 years old
  - Patients suffering from low back pain since less than 4 weeks
- a. Totally appropriate  
b. Mostly appropriate  
c. Mostly inappropriate

- d. Totally inappropriate
- e. I don't know

15. What is your perception regarding the redirection criteria of the TS/S model :

- Red flag identification
- Third episode within the 12 past months
- Patient refusal
- Doubt from physiotherapist

- a. Totally appropriate
- b. Mostly appropriate
- c. Mostly inappropriate
- d. Totally inappropriate
- e. I don't know

16. What is your perception regarding the follow-up indicators of the TS/S model :

- Proportion of included patients
- Proportion of redirected patients
- Proportion of patient refusal
- Number of interprofessional team meeting
- Waiting times
- Patient's satisfaction

- a. Totally sufficient
- b. Mostly sufficient
- c. Mostly insufficient
- d. Totally insufficient
- e. I don't know

17. What is your perception regarding the three-monthly team meetings required by the TS/S model :

- a. Totally relevant
- b. Mostly relevant
- c. Mostly non-relevant
- d. Totally non-relevant
- e. I don't know

18. What is your perception about the following objectives of the TS/S model :

- To improve quality of care
- To reduce risk of chronicity
- To reduce waiting time
- To reduce resort to emergency service
- To reduce family physician workload
- To highlight physiotherapists' skills
- To favor interprofessional collaboration

- a. Totally agree

- b. Mostly agree
- c. Mostly disagree
- d. Totally disagree
- e. I don't know

### **Section 6. Perception of physiotherapist's skills for the management of acute LBP**

19. What is your perception about the physiotherapist's skills to manage a patient with acute low back pain ?
- a. Extremely competent
  - b. Very competent
  - c. Mostly competent
  - d. Mostly incompetent
  - e. Completely incompetent
  - f. I don't know
20. What is your perception about the physiotherapist's skills to perform these usual tasks :
- Identify red flags
  - Identify yellow flags
  - Promote physical activity
  - Provide therapeutic education
  - Manage patient with active exercises
- a. Extremely confident
  - b. Very confident
  - c. Mostly confident
  - d. Mostly not confident
  - e. Not confident at all
  - f. I don't know
21. What is your perception about the physiotherapist's skills to perform shifted tasks, which are usually part of the family physician's scope of practice :
- Refer patient to the physician if required
  - Diagnose acute low back pain
  - Refer patient to traditional physiotherapy
  - Prescribe analgesic medication such as paracetamol
  - Prescribe non-steroidal anti-inflammatory drugs
  - Prescribe sick leave for workers
- a. Extremely confident
  - b. Very confident
  - c. Mostly confident
  - d. Mostly not confident
  - e. Not confident at all
  - f. I don't know

**Section 7 : Perception of the barriers and levers to the implementation of the TS/S model**

22. What is your opinion regarding the implementation of the TS/S model in your primary healthcare center?
- Totally favourable
  - Mostly favourable
  - Mostly unfavourable
  - Totally unfavourable
  - I don't know
23. According to you, what are the barrier to the implementation of the TS/S model?
24. According to you, what are the levers to the implementation of the TS/S model?

**Section 8: Ability to set up the model**

25. Do you wish to set up the TS/S model in your primary healthcare center ?
- Yes
  - No
  - I don't know
26. If yes / I don't know, have you already created a team of family physician(s) and physiotherapist(s) to implement the model?
- Yes
  - Ongoing
  - Not yet

**Section 9: Perception of the deployment of the model**

27. What is your opinion regarding the restricted implementation of the TS/S model to multidisciplinary healthcare centers?
- Totally agree
  - Mostly agree
  - Mostly disagree
  - Totally disagree
  - I don't know
28. What is your opinion regarding the extension of the TS/S model to every primary care setting?
- Totally agree
  - Mostly agree
  - Mostly disagree
  - Totally disagree
  - I don't know
29. What is your opinion regarding the restricted implementation of the TS/S model for acute low back pain and ankle sprain?
- Totally agree
  - Mostly agree

- c. Mostly disagree
- d. Totally disagree
- e. I don't know

30. What is your opinion regarding the extension of the TS/S model :

- To other musculoskeletal pathologies
  - To other pathologies, beyond the musculoskeletal field
- a. Totally agree
  - b. Mostly agree
  - c. Mostly disagree
  - d. Totally disagree
  - e. I don't know

3. Experience with interprofessional collaboration

Category	Item	Description	GP n=78 (%)	PT n=77 (%)
<i>Frequency of collaboration between general practitioner and physiotherapist</i>  <i>Interprofessionals activities</i>		Frequently	53 (68)	42 (55)
		Occasionally	19 (24)	27 (35)
		Rarely	6 (8)	8 (10)
		Never	0 (0)	0 (0)
		I don't know	0 (0)	0 (0)
	Addressing patients	Frequently	64 (82)	36 (47)
		Occasionally	9 (12)	28 (37)
		Rarely	3 (3,8)	10 (13)
		Never	2 (2,6)	2 (2,6)
		I don't know	0 (0)	0 (0)
	Discussion about shared patients	Frequently	23 (29)	17 (22)
		Occasionally	23 (29)	32 (42)
		Rarely	13 (17)	19 (25)
		Never	17 (22)	8 (11)
		I don't know	2 (2,6)	0 (0)
	Shared organization	Frequently	9 (12)	20 (26)
		Occasionally	5 (6,4)	11 (14)
		Rarely	14 (18)	13 (17)
		Never	49 (63)	30 (39)
		I don't know	1 (1,3)	2 (2,6)
	Team meetings about professional practice	Frequently	10 (13)	4 (5,3)
		Occasionally	19 (24)	34 (45)
		Rarely	23 (29)	24 (32)
		Never	24 (31)	14 (18)

	I don't know	2 (2,6)	0 (0)
Harmonization of professional practice	Frequently	9 (12)	6 (7,9)
	Occasionally	20 (26)	16 (21)
	Rarely	21 (27)	33 (43)
	Never	25 (32)	20 (26)
	I don't know	3 (3,8)	1 (1,3)
Collaborative care	Frequently	17 (22)	12 (16)
	Occasionally	24 (31)	33 (43)
	Rarely	11 (14)	13 (17)
	Never	25 (32)	15 (20)
	I don't know	1 (1,3)	3 (3,9)
Shared research project	Frequently	6 (7,7)	2 (2,6)
	Occasionally	16 (21)	15 (20)
	Rarely	13 (17)	22 (29)
	Never	42 (54)	36 (47)
	I don't know	1 (1,3)	1 (1,3)



3. Perception regarding the deployment of the model of task delegation

